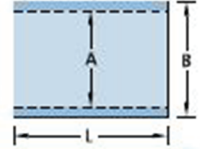


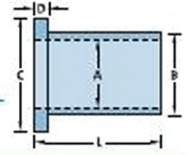
Standard Sizes for Rulon LR, J & 641 Bearings



Sleeve Bearings

NOMINAL I.D. x O.D.	I.D. -000", +002" (A)	O.D. -000", +002" (B)	RECOMMENDED HOUSING BORE	PRESS FIT	RECOMMENDED SHAFT SIZE	LENGTH ± .005" (L)	RULON® LR PART NUMBER	RULON® J PART NUMBER	RULON® 641 PART NUMBER
1/8 x 1/4	.129	.251	.250/.249	.004/.001	.1250/.1240	1/4 3/8	DRS-0204-2 DRS-0204-3	DRJS-0204-2 DRJS-0204-3	
3/16 x 5/16	.191	.313	.312/.311	.004/.001	.1875/.1865	1/4 3/8 1/2	DRS-0305-2 DRS-0305-3 DRS-0305-4	DRJS-0305-2 DRJS-0305-3 DRJS-0305-4	
1/4 x 3/8	.254	.376	.375/.374	.004/.001	.2500/.2490	1/4 3/8 1/2	DRS-0406-2 DRS-0406-3 DRS-0406-4	DRJS-0406-2 DRJS-0406-3 DRJS-0406-4	DR65-0406-2 DR65-0406-3
5/16 x 1/2	.316	.501	.500/.499	.004/.001	.3125/.3115	3/8 1/2	DRS-0508-3 DRS-0508-4	DRJS-0508-3 DRJS-0508-4	
3/8 x 9/16	.379	.563	.562/.561	.004/.001	.3750/.3740	3/8 1/2 3/4	DRS-0609-3 DRS-0609-4 DRS-0609-6	DRJS-0609-3 DRJS-0609-4 DRJS-0609-6	DR65-0609-3
7/16 x 5/8	.441	.626	.625/.624	.004/.001	.4375/.4365	3/8 1/2 3/4	DRS-0710-3 DRS-0710-4 DRS-0710-6	DRJS-0710-3 DRJS-0710-4 DRJS-0710-6	
1/2 x 3/4	.504	.751	.750/.749	.004/.001	.5000/.4990	1/2 3/4 1	DRS-0812-4 DRS-0812-6 DRS-0812-8	DRJS-0812-4 DRJS-0812-6 DRJS-0812-8	DR65-0812-4
9/16 x 13/16	.567	.813	.812/.811	.004/.001	.5625/.5615	1/2 3/4 1	DRS-0913-4 DRS-0913-6 DRS-0913-8	DRJS-0913-4 DRJS-0913-6 DRJS-0913-8	
5/8 x 7/8	.630	.876	.875/.874	.004/.001	.6250/.6240	5/8 3/4 1	DRS-1014-5 DRS-1014-6 DRS-1014-8	DRJS-1014-5 DRJS-1014-6 DRJS-1014-8	DR65-1014-5 DR65-1014-8
11/16 x 15/16	.693	.938	.937/.936	.004/.001	.6875/.6865	3/4	DRS-1115-6	DRJS-1115-6	
3/4 x 1	.755	1.001	1.000/.999	.004/.001	.7500/.7490	1/2 3/4 1 1-1/2	DRS-1216-4 DRS-1216-6 DRS-1216-8 DRS-1216-12	DRJS-1216-4 DRJS-1216-6 DRJS-1216-8 DRJS-1216-12	DR65-1216-6 DR65-1216-12
7/8 x 1-1/8	.880	1.126	1.125/1.124	.004/.001	.8750/.8740	3/4 1	DRS-1418-6 DRS-1418-8	DRJS-1418-6 DRJS-1418-8	
1 x 1-1/4	1.005	1.251	1.250/1.249	.004/.001	1.000/.9990	3/4 1 1-1/2	DRS-1620-6 DRS-1620-8 DRS-1620-12	DRJS-1620-6 DRJS-1620-8 DRJS-1620-12	DR65-1620-8 DR65-1620-12
1-1/8 x 1-3/8	1.130	1.376	1.375/1.374	.004/.001	1.125/1.124	3/4 1 1-1/2	DRS-1822-6 DRS-1822-8 DRS-1822-12	DRJS-1822-6 DRJS-1822-8 DRJS-1822-12	
1-1/4 x 1-1/2	1.255	1.501	1.500/1.499	.004/.001	1.250/1.249	3/4 1 1-1/2 2	DRS-2024-6 DRS-2024-8 DRS-2024-12 DRS-2024-16	DRJS-2024-6 DRJS-2024-8 DRJS-2024-12 DRJS-2024-16	DR65-2024-16
1-3/8 x 1-5/8	1.380	1.626	1.625/1.624	.004/.001	1.375/1.374	1 1-1/2	DRS-2226-8 DRS-2226-12	DRJS-2226-8 DRJS-2226-12	
1-1/2 x 1-3/4	1.506	1.751	1.750/1.749	.004/.001	1.500/1.499	1 1-1/2 2	DRS-2428-8 DRS-2428-12 DRS-2428-16	DRJS-2428-8 DRJS-2428-12 DRJS-2428-16	DR65-2428-16
1-5/8 x 1-7/8	1.631	1.876	1.875/1.874	.004/.001	1.625/1.6235	1-3/4	DRS-2630-14		
1-3/4 x 2	1.756	2.001	2.000/1.999	.004/.001	1.750/1.7485	1-3/4	DRS-2832-14		
1-7/8 x 2-1/8	1.881	2.126	2.125/2.124	.004/.001	1.875/1.8735	2	DRS-3034-16		
2 x 2-1/4	2.006	2.251	2.250/2.247	.006/.001	2.000/1.9985	2 2-1/2	DRS-3236-16* DRS-3236-20*		
2-1/4 x 2-1/2	2.259	2.502	2.500/2.497	.008/.002	2.250/2.2485	2-1/2	DRS-3640-20*		
2-1/2 x 2-3/4	2.510	2.752	2.750/2.747	.008/.002	2.500/2.498	2-1/2	DRS-4044-20*		
2-3/4 x 3	2.760	3.002	3.000/2.997	.008/.002	2.750/2.748	3	DRS-4448-24*		
3 x 3-1/4	3.011	3.252	3.250/3.247	.008/.002	3.000/2.998	3	DRS-4852-24*		

* I.D. AND O.D. -.000 + .003



Flange Bearings

NOMINAL I.D. x O.D.	I.D. -000", +002" (A)	O.D. -000", +002" (B)	RECOMMENDED HOUSING BORE	PRESS FIT	RECOMMENDED SHAFT SIZE	FLANGE DIA ±.005" (C)	FLANGE THK ±.003" (D)	LENGTH ±.005" (L)	RULON® LR PART NUMBER	RULON® J PART NUMBER	RULON® 641 PART NUMBER
3/16 x 5/16	.191	.313	.312/.311	.004/.001	.1875/.1865	.437	1/16	1/4 1/2	DRF-0305-2 DRF-0305-4	DRJF-0305-2 DRJF-0305-4	
1/4 x 3/8	.254	.376	.375/.374	.004/.001	.2500/.2490	.500	1/16	3/8 1/2	DRF-0406-3 DRF-0406-4	DRJF-0406-3 DRJF-0406-4	DR6F-0406-4
3/8 x 5/8	.379	.626	.625/.624	.004/.001	.3750/.3740	.875	1/8	1/2 3/4	DRF-0610-4 DRF-0610-6	DRJF-0610-4 DRJF-0610-6	DR6F-0610-4
1/2 x 3/4	.504	.751	.750/.749	.004/.001	.5000/.4990	1.000	1/8	1/2 3/4 1	DRF-0812-4 DRF-0812-6 DRF-0812-8	DRJF-0812-4 DRJF-0812-6 DRJF-0812-8	DR6F-0812-8
5/8 x 7/8	.630	.876	.875/.874	.004/.001	.6250/.6240	1.000	1/8	3/4 1	DRF-1014-6 DRF-1014-8	DRJF-1014-6 DRJF-1014-8	DR6F-1014-8
3/4 x 1	.755	1.001	1.000/.999	.004/.001	.7500/.7490	1.250	1/8	1	DRF-1216-8	DRJF-1216-8	DR6F-1216-8
1 x 1-1/4	1.005	1.251	1.250/1.249	.004/.001	1.0000/1.9990	1.500	1/8	1-1/2	DRF-1620-12	DRJF-1620-12	DR6F-1620-12
1-1/4 x 1-1/2	1.255	1.501	1.500/1.499	.004/.001	1.2500/1.2490	1.750	1/8	2	DRF-2024-16	DRJF-2024-16	DR6F-2024-16
1-1/2 x 1-3/4	1.506	1.751	1.750/1.749	.004/.001	1.5000/1.4990	2.000	1/8	2	DRF-2428-16	DRJF-2428-16	DR6F-2428-16
1-3/4 x 2	1.756	2.001	2.000/1.999	.005/.001	1.750/1.749	2.250	1/8	3	DRF-2832-24*		
2 x 2-1/4	2.006	2.251	2.250/2.249	.005/.001	2.000/1.999	2.500	1/8	3	DRF-3236-24*		

* I.D. AND O.D. -.000 + .003

Thrust Bearings



NOMINAL I.D. x O.D.	I.D. -000", +005" (A)	O.D. +000", -003" (B)	THICKNESS ±.003" (L)	RULON® LR PART NUMBER	RULON® J PART NUMBER	RULON® 641 PART NUMBER
1/4 x 5/8	.254	.625	.060	DRT-0410-2	DRJT-0410-2	DR6T-0410-2
3/8 x 3/4	.379	.750	.060	DRT-0612-2	DRJT-0612-2	DR6T-0612-2
1/2 x 1	.504	1.000	.060	DRT-0816-2	DRJT-0816-2	DR6T-0816-2
3/4 x 1-3/8	.755	1.375	1/8	DRT-1222-4*	DRJT-1222-4*	DR6T-1222-4*
1 x 2	1.005	2.000	1/8	DRT-1632-4*	DRJT-1632-4*	DR6T-1632-4*
1-1/2 x 3	1.506	3.000	1/8	DRT-2448-4*	DRJT-2448-4*	DR6T-2448-4*

* I.D. AND O.D. -.000 + .006

Self-Reading Part Numbering System

The first two characters of the composite part number are constant and stand for Rulon® LR. The third character is the material code that corresponds to the desired material. If no code is listed, then the material is always Rulon® LR. The type follows next and they are; (S) sleeve, (F) flange, and (T) thrust bearing.

Aside from the available listed sizes on the previous tables, all listed standard bearing sizes can be requested in these materials. These are special request items subject to special pricing and delivery.

DR7S - 1620 - 8 = RULON® 1337 SLEEVE BEARING
 NOMINAL I.D. 1"
 NOMINAL O.D. 1.25"
 LENGTH 1"

↑ BEARING TYPE ↑ I.D. (IN 1/16" INCREMENTS) ↑ O.D. (IN 1/16" INCREMENTS) ↑ BEARING LENGTH (IN 1/8" INCREMENTS)

RULON® MATERIAL CODES

RULON®:	J	641	W2	123	488	957	XL	F	142	945	1045	1337	1410	1439	AR
CODE:	J	6	W	1	4	9	X	F	2	5	0	7	3	8	A